

# PORTLAND ANCHOR



*"Louisville's Oldest Neighborhood Newspaper"*

Vol. 50, No. 8

August, 2022



## Hungry for Music/Love City Back-To-School Fun Day

*Submitted by Kay Coyte*

Hungry for Music, a nonprofit that collects and donates musical instruments to children, along with Louisville Public Media's Instrumental Partners and Love City, is holding a Back-to-School Fun Day on Sunday, Aug. 7, from 2-6 p.m. at the St. Cecilia campus at 2519 Saint Cecilia St.

The event will offer music on stages at Porkland BBQ, in the historic church sanctuary and in outdoor space shaded by the campus' mighty oaks. Hungry for Music will hold an instrument drive and instrument petting zoo and Instrumental Partners will add hands-on music-making activities for kids and families. Community groups, such as Portland Museum, will have booths and there will be lots of play activities (inflatables, face painting), food and snow cones. Youth with the River City Drum Corps and other groups, plus local musicians, will perform and DJ Always (a k a River City Drum Corps director Albert Shumake) will spin tunes.

Since becoming a nonprofit in 1994, Hungry for Music has brought the healing quality of music to more than 16,000 children in 50 states and 32 countries, including hundreds here in Louisville. Donations support school and community youth programs but also social workers via music therapy.

Love City's mission is "to simply love our neighbors and community, creating a culture that empowers a movement of loving people as they are," say founders Inga and Shawn Arvin. They offer programs like the Mighty Oak Academy for grades K-8,

*(Continued on Page 7)*



## BASF Corporation Champions Responsible Care® Principles

*Dwayne Nichols, BASF Louisville Site Leader*

The BASF site, located at 3400 Bank Street in Portland, has been a long-time neighbor and supporter of the Portland Community. There has been manufacturing in some form at the Site since 1892. It is believed that operations started as the Bonnie Brothers whiskey distillery up until 1920, the start of prohibition. At that time, the site began producing pigments as the Kentucky Color and Chemical Company. Today, BASF manufactures colorants used primarily in interior and exterior paints. Much has changed since 1920, including programs and actions like the American Chemistry Council's Responsible Care® (RC) program that are protective of the environment, and the health and safety of our employees, contractors, and communities.

The RC program is a voluntary initiative of the chemical industry to continuously improve in the areas of environmental protection, health and safety.

Companies in the chemical industry and associations in more than 50 countries support this initiative. BASF has participated in the RC program since 1992.

BASF and our site in Louisville have the responsibility to provide the safest operations and products for our employees and customers while protecting our communities and the environment. We consider the health, safety and security of people and the protection of the environment to be our most fundamental responsibilities.

Our core business - the development, production, processing, and transport of colorants - demands a responsible approach. We systematically address risks with a comprehensive Responsible Care Management System (RCMS), which is constantly being further developed.

*(Continued on Page 4)*

Follow us on **Portland Now, Inc. and**  
**[portlandlouisville.com](http://portlandlouisville.com)**  
for a color view of the Portland Anchor

**DEADLINE FOR NEXT ISSUE: AUGUST 17th, 2022**

Look for your next issue August 26 - September 3

# PORTLAND NOW, Inc.

Monthly Neighborhood Meeting

August 2, 2022 - 6:00 PM

The Table - 1800 Portland Ave.

This month we will have 20 of the Judicial Candidates at the meeting for citizens to meet and hear their Judicial Philosophy. This is the best way to get to know who is running for District and Circuit court seats here in Jefferson County. You are urged to mark your calendars now. Make sure you are at the August Meeting.



## 2022 Portland Anchor Deadlines and Publishing Dates

Issue Month	Deadline	Subscription Delivery Date
September 2022	<b>AUGUST 17</b>	August 26 - September 3
October 2022	September 21	September 30 - October 8
November 2022	October 19	October 28 - November 5
December 2022	November 16	November 25 - December 3
January 2023	December 14	December 25 - January 3, 2022

\* Dates are subject to change if needed.

### WE ARE A CONTRIBUTOR'S PAPER AND WE WELCOME YOUR MAIL!

The Portland Anchor welcomes writing and photographs!

Please send them to:

The Portland Anchor  
P.O. Box 2108  
Louisville, KY 40201-2108

Include your name, signature, address, and phone number. We cannot print copy righted materials without proper release. All contributor writings that are published will carry the writer's name.

**READABLE:** It is helpful if your writings are typewritten or printed clearly, with names correctly spelled. Remember someone has to be able to read what you have written.

**PHOTOS:** All photographs should have a name and address on the back, and should identify the subject in the picture. *Do not send laser print pictures, as they are usually of poor quality and won't print well.* A self-addressed envelope should be included if you want the photo returned. **Please enclose \$10.00 for each photograph** you wish to have published. If payment isn't received with pictures, they will not be published.

We reserve the right to edit, reject, or delay the publication of any written material or photographs.

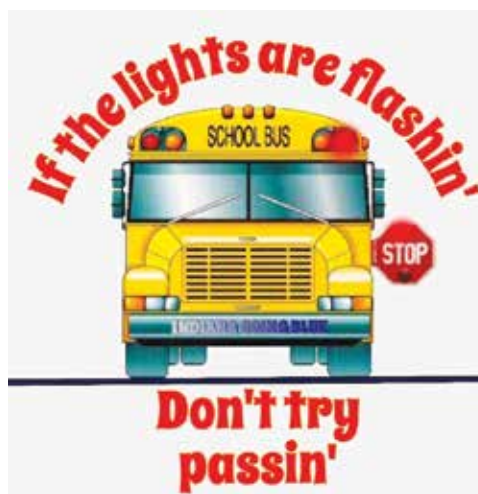
The content of any article or ad is the responsibility and/or opinion of the writer of same, and is not necessarily the opinion of the Anchor and/or its staff.



### Letter to the Editor

I want to thank Public Works for repaving 35th Street by Kroger and 34th Street by Workwell Industries, they did a fine job.

*William Barnes*



Articles received after the **DEADLINE DATE**, which is printed on the front page, will be held for publication in the following month's issue.

## The Portland Anchor Subscription Form

New Change of  Name  Address  
 Renewal

### Please Print

If renewal, please print exactly as it appears on mailing label, or remit label.

NAME \_\_\_\_\_

ADDRESS \_\_\_\_\_

CITY \_\_\_\_\_ STATE \_\_\_\_\_

ZIP \_\_\_\_\_ TELEPHONE # \_\_\_\_\_

Beginning October 2021,  
New & Renewal Rate Increase

Mail To:

**1 year \$15.00**

INCLUDE PAYMENT WITH SUBSCRIPTION

## The Portland Anchor

P.O. Box 2108  
Louisville, KY 40201-2108  
**775-6036**

Published Monthly By  
Anchor Publication, Inc.

### Directors

Gordon Brown  
Ann Cockrell  
Houston Earl Cockrell  
Charlie Frick  
Patricia Miller  
Judy Schroeder  
Alma Wright

### Founders

Paul Bissig  
Gordon Brown  
Houston Earl Cockrell  
Kathy Frost  
Sue Gentry  
William A. Smith  
Sharon Wilbert

The Portland Anchor  
Subscription Department  
PO Box 2108  
Louisville, KY 40201-2108

# Chit Chat

Information in Chit Chat is published **Free** as a service to Portland Anchor readers so that readers have a forum to announce important family events, and to express affection and love toward family, friends and neighbors. The Portland Anchor cannot verify the information published in 'Chit Chat', and assumes no responsibility for its truth or accuracy. **Photos cost \$10.00.** If you want photo returned, send a self addressed stamped envelope. **Do not send zerox or laser copies of photos.** Send original photo or save it to a disk or CD.

**Chit Chat items must be no more than 100 words or less. No more than 10 items per person.**  
**We reserve the right to edit or reject items that we feel are not appropriate for our publication.**



## HAPPY Anniversary

*Happy Anniversary Katie!!*

I am lucky to have been married to you for the last seven years. You have been an incredible life partner, best friend, and lover. We've had countless adventures together big and small, and I've loved our big trips as much as our evening walks. I look forward to everything else that comes our way.



### Mr. & Mrs. Shirley Kelly Celebrate 70 Years of Marriage

JoAnn Elizabeth Patton and Shirley Gene Kelly were married August 2, 1952 at St. Cecilia Catholic Church. The couple have five children, 9 grandchildren, and 8 great grandchildren. He is a retired Teamster Local 89. She is retired from Old Fitzgerald Distillery. They will celebrate their 70th Wedding Anniversary with a Mass and a family & friends dinner celebration.



### Table of Plenty II

*"Serving a free meal to all who come"*

**Wednesday, August 31, 2022**

**12 - 4 PM**

2222 W. Market Street

This is a joint outreach of St. Agnes Catholic Church, Good Shepherd Catholic Church and Catholic Charities

*Menu:*

*Pork loin, green beans, mashed potatoes, cookie*

*Meals will be served indoors*

**All are welcome!**

**Dates and times subject to change.**

### It's that time!

Hello Portland, little Carmie and Grampa here. Grampa and me are getting ready to take the ATV to get checked out before the deer season gets here. I've been away at summer school and now for the next 3 weeks I'm doing nothing, sorry about your luck Grampa!

*See ya on the water or in the field!*



**Support Your**



**American Legion  
 Shawnee Post - 193**

**2800 West Main - 776-8596**

**HALL RENTALS**

**FOR BIRTHDAYS, WEDDINGS, REUNIONS ETC**

LIC #0372

**Family Health Centers  
 is offering  
 FREE Health Classes!**

Zumba, cooking classes, family activities, and more are available in-person or online on your phone, tablet, or computer.

Go to [www.fhclouisville.org/healthed](http://www.fhclouisville.org/healthed) for more information.

Or, call Kristin at Family Health Centers (502) 772-8588

**Don't miss the deadline for the  
 September Portland Anchor  
 AUGUST 17<sup>th</sup>**

## A Summer Karaoke Fundraiser with indoor Yard Sale

THE SALVATION ARMY  
306 N. 28th Street  
Saturday, August 6th  
5:00 - 9:00 P.M.

Adults: \$8.00

Children: Under 12 - \$4.00

Includes: Spaghetti, meat sauce, salad, garlic bread, tea or coffee  
(Dessert and sodas are extra)  
Please call 502-778-1912 for more information.



## Neighborhood House Senior Program Yard Sale

Saturday, August 6th  
9:00 A.M.

Stop by and shop. Seller tables are \$10.

For more info or to reserve a table, contact Ms. Janet, Senior Program Coordinator, at 502-774-2322.

## BASF Corporation Champions Responsible Care® Principles

(Continued from Page 1)

Below are the principal areas of RCMS focus:

- **Product Stewardship:** we care for the safety of our products from research and development through production and all the way to our customers' application. We work continuously to ensure that our products pose no risk to people or the environment when they are used responsibly and in the manner intended.
- **Transportation and Storage:** we want our products to be safely loaded, transported, handled and stored. Our goal is to prevent incidents along the entire transportation chain — from loading and transportation to unloading.
- **Occupational Safety:** the safety of our employees, contractors, neighbors and environment remains our top priority. Reducing exposures during production operations is important for every individual working at BASF and we continually work to strengthen the safety culture.
- **Health:** our goal is to protect and maintain each employee's health at the workplace and to assist in assuring that BASF products are safe for employees, customers, neighbors or consumers when handled properly.
- **Environment:** our products and system solutions help conserve resources, ensure healthy nutrition, and improve the quality of life. Our efforts to further reduce emissions along the value chain and our climate protection products make an important contribution.
- **Process Safety:** our process safety standards provide the framework for the safe construction and operation of our plants. We routinely perform in-depth audits of our plants and update safety concepts where necessary. By continuously adapting to the latest technical standards, we are always improving our level of safety from process development to the ongoing operation of our facilities.
- **Emergency Response & Security:** we are well prepared for crisis situations thanks to our global, regional or local emergency response plans.
- **Energy:** we are committed to energy efficiency and global climate protection. We increase energy efficiency along the value chain and utilize, for example, modern technologies for generating steam and electricity, energy-efficient production processes, and comprehensive energy management.
- **Community Engagement:** The BASF Louisville Site is proud to be a Supporting Sponsor of the Portland Festival, as well as an annual sponsor of the Portland Elementary School "Adopt-A-Family" program. Additionally, we provide financial support to multiple non-profit organizations throughout Portland and Greater Louisville.

For decades, BASF has been steadfast to the principles of Responsible Care, and the Louisville site remains dedicated to fulfilling these responsibilities daily and being a Good Neighbor. Our team will continue to recognize and control risks and exposures in all areas of our business.

# CARRY OUT & DELIVERY

# Annie's Pizza

LOCALLY OWNED!  
COMMUNITY SUPPORTED!  
COMMUNITY INVOLVED!



You've tried the Rest,  
Now Try the BEST!



## HOME OF THE 28" PIZZA



PIZZA HAPPY HOUR  
-SPECIAL-

PICK UP ONLY 4-7PM MON-FRI ONLY  
1 LARGE 1-TOPPING PIZZA  
\$8.99

\*tax. Extra cheese & toppings  
are additional cost

Serving  
Louisville  
for 32  
Years!

4771 Cane Run Rd. ~ 449-4444

Shively, PRP, Cloverleaf, Riverport & Campground Rd. Area

Sun-Thurs 3pm-10pm, Fri & Sat 3pm-11:30pm

2520 Portland Ave. ~ 776-6400

Portland & West End

Sun-Thurs 3pm-10pm, Fri & Sat 3pm-11:30pm

All pizza sales is plus tax. Additional cheese is extra price. Prices are subject to change.

## Anchor July Subscriptions

Well, it has happened once again. Our July subscriptions to be mailed somehow disappeared from the printer in Sheperdsville, who delivers them to the Post Office on Crittenden Drive to be mailed out. We offer our sincere apology about this, but we are going to make changes to make sure this does not happen again.

The printer says they were on the delivery truck along with other publications going to the Crittenden Drive site and the Post Office there tells me they never received them and the postage was never taken out of our account. Every month I check to see when they are going to the Post Office to be mailed out, and I call the Post Office on Crittenden Drive to make sure they have received them and how much the postage is for that month.

I fear they're driver took them on to the Gardiner Lane site, for which he also has deliveries to them also on the same run. If so, they could have been pushed aside because they should have gone to the Crittenden Post Office.

However, no one is willing to take the blame in this, so our subscription Anchor's for July 2022 were lost somewhere, and we are very sorry for this.

Years ago, we had a Portland resident

that discovered Facebook, and made a lot of friends on the site. At the time, we had one front page logo with the mailing label on it. However, the same resident thought it would be fun to send the Portland Anchor to all of her new found friends and she wrote their many addresses on them and sent them out, thus depleting our postal account for our paying subscribers. When they started coming back for missing address information, I put 2 and 2 together and figured out who it was. Alma Wright talked to her and told her she had to stop, and we finally had to threaten legal action. We quit taking any of her monthly items to publish and she finally stopped. That is why the ones you pick up around Portland do not have the mailing label on them, only the subscriptions. So I do not have extras that I can put labels on to mail. But I have been really stressed out about it, and thought I needed to let you all know what is happening, and we are sorry.

For the August issue, we will add another month on to all subscriptions. And I will pick up the subscriptions that will be labeled, in Sheperdsville and take them to the Post Office myself to ensure they get there and accounted for delivery to our subscribers. I am so sorry this has happened again! Sherry Stewart



*Officer Nick Green*



*Officer Noah Cole*

## 1st Division Advisory Board Officers Of The Month

At the July Advisory Board meeting for the 1st Division, Officers Nick Greene & Noah Cole were recognized as the Officer Of The Month for the division.

At the beginning of their shift on Monday June 27 Officers Greene and Cole had stopped by Shorty's at 18th and Broadway to visit with the business owner. Something they try to do at the beginning of each shift is meet with a local business owner. They were approached by a man who came and told them his child was having trouble.

They went outside to the vehicle and found that his daughter was not breathing. Officer Greene began life saving CPR that he had been taught in LMPD Academy training. Officer Cole sprang into action getting LFD and LMEMS responding the non-breathing child. Soon the baby girl was crying and breathing again from the actions of Officers Greene and Cole.

Their actions reflect great credit on not only their training but on the professionalism of these two officers who in an instant reacted to save an infants life. This is the story of LMPD that needs to be told, Officers Cole & Greene serving their city with professionalism such that an infant will bring love and joy to her mother and father.

**WE WELCOME**

**NEW PATIENTS**

**WE ACCEPT**

**PASSPORT HEALTH PLAN, HUMANA CARESOURCE,**

**ETNA BETTER HEALTH and WELLCARE OF KENTUCKY**

**Most Dental Plans & Dental Insurance Welcome**

**No Appointment Necessary – Walk-ins & Emergencies Welcome**

**We now accept major credit cards**

**PORTLAND DENTAL CENTER**

**26th & Bank Street**

**778-0999**

*Family Dentistry*

## Good Shepherd Men's Club Night Fun with The Bluegrass Blues Brothers Band featuring Elvis

*By Pop Thomas*

Good Shepherd Men's Club wants to thank everyone who came out for our night of music. So good to see the community come together for a nite of fun and fellowship.



# HISTORIC PORTLAND

---

# GREAT NEIGHBORHOOD

---

# GOOD PEOPLE

---

# VOTE BILL DIERUF



*Kay Coyte with donated instruments.*



## Hungry for Music/ Love City Back-To-School Fun Day



*(Continued from Page 1)*

summer camps, youth sports and a community garden. Future plans include a music education program, and Hungry for Music has pledged to support those efforts.

Hungry for Music's founder/director Jeff Campbell is on a national chapter set-up tour that started June 25 at the Rock & Roll Hall of Fame in Cleveland, and this summer has stops in Chicago, Detroit and Pittsburgh as well as Louisville. Chapters will help him reach more children while keeping musical instruments in the area where they were donated, Campbell said. Updates and other details will be posted on the Hungry for Music website, [www.HungryforMusic.org](http://www.HungryforMusic.org), and social media pages, including Facebook ( <https://www.facebook.com/HungryForMusic> ).

Sponsors of the chapter set-up tour include the American Federation of Teachers, National Association of Professional Band Instrument Repair Technicians (NAPBIRT), whose members have assisted Hungry for Music in refurbishing donated instruments; D'Addario Foundation, the charity arm of the nation's leading strings and accessories manufacturer; and JAMBARs, an organic energy bar maker that supports music education.

For more information, and details on how to donate, visit [HungryforMusic.org](http://HungryforMusic.org). Inquiries can be emailed to [contact@hungryformusic.org](mailto:contact@hungryformusic.org) or through the website.

Resources/links:

Hungry for Music: <https://hungryformusic.org>

YouTube overview: <https://www.youtube.com/watch?v=GMd19pOOABA>

Love City

344 N 26th St, Louisville, KY 40212

502-272-0786

[info@lovecityinc.org](mailto:info@lovecityinc.org)

<https://lovecityinc.org>

Instrumental Partners <https://wuol.org/instrumentalpartners>

## Louisville Investment Property LLC

### We Are Portland Proud!

- We Buy Houses
- Any Condition!
- Bankruptcy/Foreclosure/Tax Liens/Damaged
- We Buy Commercial Properties And Lots
- We Are Cash Buyers
- We Can Close Fast, Putting Money In Your Pocket
- No Fees Or Costs For You!

Our Mission Is To Improve Portland One House At A Time.

We help responsible investors purchase distressed properties in Portland, creating affordable housing for rent and for purchase in the neighborhood.

**Help us make Portland great again,  
call or text us at 502-715-5883**

# Obituaries



**Pamela Jean Baker**, 67, passed away July 10, 2022. Pamela was a member of the old Grace Lutheran Church. She was a fun loving spirit who loved spending time with her family. She was preceded in death by her loving husband, William Bryant Baker Sr.; her parents, Charles Leister Jr. and Betty Jean Leister. Left to cherish her memory are her children, Bryant Baker Jr. and Christy Fife (Brian); grandchildren, Jessica Baker and Katie Baker; brothers, Mickey Ray Leister and Mark Allen Leister Sr.; sister, Laura Ann Leister. Funeral Services will be 11:30 A.M. Thursday, July 14, 2022 at J.B. Ratterman & Sons 2114 W. Market Street with burial in Resthaven Memorial Park.



**Talena Marie (Rankin) Baskerville**, 44, passed away unexpectedly, June 9, 2022. She was born June 29, 1977 in Louisville, Kentucky to the late Donald Rankin and Lisa Underwood. She was a former waitress for Jerry's Restaurant on Dixie Highway; she enjoyed going to Bingo; was a Christian by faith; a die-hard U of L fan; she loved and enjoyed spending time with her family and was a great Mom. Those left to cherish her memory are her seven children, Tracey Rankin, Charlie Divine, Austin Baskerville, Angela Divine, Adam Divine, Amber Rankin and Ciara Bachelder; sister, Janice Rankin; brother, Donnie Rankin; and six grandchildren. Legacy Funeral Center-Schoppenhorst Chapel, 1832 W.



**Stephanie Chere**, 48, passed away June 28, 2022. Stephanie was born March 17, 1974 in Atlanta, Georgia to Kenneth and Mary Ann Florence. She was a Catholic by faith and loved gardening and volunteering in her community. Left to cherish her memory are her children, Justin Chere and Joseph Jones; father, Kenneth Florence; sister, Kara Norelien. J.B. Ratterman & Sons Funerals & Family Cremation Care 2114 W. Market Street was in charge of arrangements.



**James H. Denham Jr.**, 61 of Louisville, Ky., passed away unexpectedly July 20, 2022. He was preceded in death by his mother, Mildred Denham and father, James H. Denham Sr. Left to cherish his memory are his daughter, Kara Denham (Glenn); his 5 grandchildren, Sierra (MJ), Bub, Lexi, Kaylee, and Adalynn; 2 sisters, Sandra Denham and Sue Hume (George). Services are private. J.B. Ratterman & Sons Funerals & Family Cremation Care 2114 W. Market Street is in charge of arrangements.

In Loving Memory  
Forever in our Hearts



LEGACY FUNERAL CENTER  
— SCHOPPENHORST CHAPEL —  
A MEMBER OF SCOTT FAMILY SERVICES



LEGACY FUNERAL CENTER - SCHOPPENHORST CHAPEL

1832 W. MARKET STREET, LOUISVILLE, KY 40203

**502-585-4394**

LEGACYKENTUCKIANA.COM

"SERVING FAMILIES WITH RESPECT SINCE 1892"



**"FLOWERS  
FOR ALL OCCASIONS"**

2531 Bank St.  
Louisville, KY 40212  
**772-3649**

*Cool down those hazy days  
of summer with a beautiful  
fresh arrangement!*

*Don't delay, order today!*

Hours:  
8 AM - 5 PM Mon. - Fri.  
8 AM - 3 PM Saturday



Country-Wide and Southern Indiana Delivery



## Obituaries



**Marilyn Nadell (Cubert) McDonald Senn**, 92, Passed away May 11, 2022. A Celebration of her Life was held Saturday, July 9th, 2022 at Woodland Pavilion, Broad Run Park, 10702 Broad Run Parkway Louisville, Ky. 40291.. It's a picnic celebration to honor a wonderful mother, stepmother, grandmother, great grandmother, great great grandmother, and friend.

**Robert Michael Mendlik**, 33, of Cloquet, MN. Passed away June 26, 2022 in Bowling Green, Ky. Robert was a U.S. Marine Corps Veteran and worked as a kitchen manager. He is survived by his wife, Toni; children, Kodah Mendlik, Kairi Mendlik, and Kloie Mendlik; parents, Michael and Roxanne Mendlik; sister, Tiffany Mendlik; several nieces. J.B. Ratterman & Sons Funerals & Family Cremation Care 2114 W. Market St. is in charge of arrangements.



**Janet Lynn Parks**, 64, passed away July 3, 2022. Janet had a heart as big as the world. She never met a stranger and she loved to sing and tell jokes but most of all she loved her family. She was preceded in death by her daughter, Deiana Nicole Bridges; her parents, Ronnie and Naomi Parks. She is survived by her siblings, Debra May (Rev. Randy), Randall Parks (Anita), Pamela Parks, and Richard Parks (Opal); many nieces, nephews, and friends. She will be very missed by all. A Memorial Service will be held at 1617 McVey Rd. Sedalia, Mo. 65301 at a later date.



**Gary Lipsey**, 67, of Portland passed away July 14, 2022 at Audubon Hospital. He was preceded in death by his parents and brother. He is survived by his wife, Lori; sisters Lou Sunderman and Sue Lipsey; children Tammy (Tony) Dexter, Nick Lipsey (Brittany), Whitney Bryan (Daniel), Brittany Theiler (Joe), Nick Bryan (Hailey) and grandchildren Aubree, Parker, Hudson, Avery, Allyson, Courtney, Cody, Eli and Easton.



**Anthony Wayne Powers**, 46, passed away July 13, 2022. Anthony was preceded in death by his parents, Joe Green and Norma Powers. He is survived by his sisters, Cheryl Garlinger and Debra Hardin; uncles, Mercer Ballard and Glenn Ballard; aunt, Loretta Fay O'neil; cousins, Allen Decker, Glenn Ballard, and David Ocker; nieces, Makenna Powers, Maegan Hunt, Brittany Miller, and Brooke Powers; sister in law, Rachael Ballard. J.B. Ratterman & Sons Funerals & Family Cremation Care 2114 W. Market Street is in charge of arrangements.

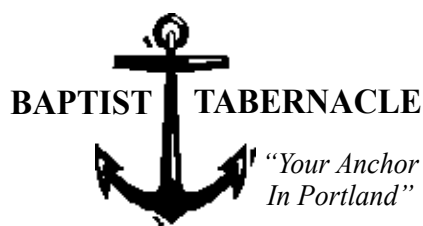


**Bonnie Jean (Corn) Smith**, 75, passed away June 17, 2022 at home with her family by her side. Bonnie was born September 28, 1946 in Lawrenceburg, KY to the late Earl and Blanche (Shouse) Corn. She was a former secretary for Humana for 23 years, where she worked in the law office. She enjoyed penny poker night, going to the casino, dance, her U of L Cardinals, drives in the country, she said her best year was 2010, but her favorite times were spent with her family having cookouts. Besides her parents, Bonnie is preceded in death by her loving husband, James M. Smith; and two sons, John M. Smith and Donnie F. Bishop. Those left to cherish her memory are her son, Ronnie E. Bishop (Melissa); daughter, Faith Dunaway (Jenny Miller); brother, Glenn Corn (Rose Marie); special friend, Tolbert Milburn; grandson she helped raise, Jacob Bishop (Renee); nine grandchildren; and several great grandchildren. Legacy Funeral Center - Schoppenhorst Chapel, 1832 W. Market Street was in charge of arrangements with burial in Louisville Memorial Gardens West.



**Robert Michael Sears**, 30, of Corydon, IN passed away July 9, 2022. Robert worked for Awning Tech. He loved music and was a great dancer. His daughter McKenzie was the center of his life and was his cherished best friend. Everyone's day was brightened when Uncle RaRa was with them. He had a talent for making people laugh and want

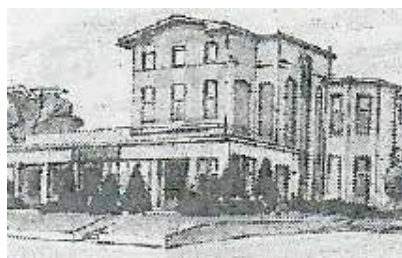
30th & Market 778-4419



www.baptistabernacle.com

## J.B. Ratterman & Sons

Funerals and  
Family Cremation Care



2114 W. Market Street  
776-4661

*Pleasingly affordable, at life's most difficult time  
Traditional Quality, Smart Prices*

Tony Ratterman, owner  
Lenny Black, office manager

We are looking to purchase one or two graves at  
Portland Cemetery. Please call our office.

## Germans, Geese, and Your Next Project

I'm a little worried about how cold Germans will get this winter if Russia cuts off their natural gas pipeline. No wonder Europe has, for decades, been all about climate change and winterizing houses...they've been trying to tear the leash off from their dependence on Russian energy. We will see how that all pans out. It comes down to a single word/concept called 'resilience'. For instance, in contrast to Germany's Russian dependence, Norway has massive reserves of oil in its own North Sea as well as more hydroelectricity than it knows what to do with. Norway has more resilience than Germany, and so has a better poker hand on the world's stage.

**Bringing this down to Portland**, let's dispense with any notion of local resilience of this type—in fact did you know the city makes an effort to change the meaning of "resilience" to mean "getting housing". Really? A good conversation about local collective energy resilience is probably miles away, so then we are left to talk about baby steps—without bureaucratic aid of any kind. What does that look like? Who knows, but I have two examples to masticate on. **FIRST**, the Canadian geese are resilient by feasting all season on the grass by the river... but now that it's hot and nasty, they just hang out "at the pool", e.g. in the Ohio River shallows (see picture of geese acting like it's spring break in Florida). While all extant animals around here are most likely resilient, it's the geese that are out in the open about it. Their resilience is on display. Good teachers, those geese. **SECOND**, while food prices are rising, an easy dumpster dive (alley scrounge) in a better part of town finds a semi-rotting raised bed that someone has thrown out as refuse. Putting the foundling into the trunk and hauling it to the sunny side of the yard (see picture of the lonely planks)...with a few seeds from the library's seed stash...and you have free food in spades in a few weeks (see picture of massive squash, watermelon, okra and tomatoes). The only thing to add is water...which can be hoarded in 55 gallon drums (as most resilient folks do) for when the weather turns droughty-like. Everyone knows that rain barrels can be attached to downspouts, but this can be challenging, so other ways can be devised to collect water—but the rain barrels are the easiest. **MY CHALLENGE:** Be like the geese, and stick your neck out to show your resilience. What I mean is to put a garden in your front lawn and to put your rain barrel in view from the front sidewalk. This sends the message, "Yeah, I'm resilient and show it off, so what?! But if you get too close to me, I'm still going to hiss at you." **My 2nd Challenge** is for the U of L Anthropology Department, holed up in East Portland somewhere, to track observable front yard gardens and



water collection barrels over time and write a thesis or publish a paper about it. Send the link to the article to the Anchor when published so that we can all enjoy and be edified. Could you entitle the research: Of Geese and Men? Now go out there and get resiliented with manifest resilience. Oh, and be grateful we're not in dire straits like the Germans, PortlandNate  
#EyesWideOpenIsTheNewNormal



OUR SHOT TO END  
COVID-19!

COVID-19 Vaccines for  
6 months and older are  
now available!

*Protect your children.  
Protect your family. Get vaccinated!*

[www.fhclouisville.org](http://www.fhclouisville.org)

Call To Schedule 502-772-8110

## July 2022 Portland Library Programs

Call 502-574-1744 for any questions!

### Portland Library Hours

Monday - Wednesday, 10:00 AM - 8:00 PM

Thursday, 12:00 PM - 8:00 PM

Friday - Saturday, 12:00 PM - 5:00 PM

Sunday, closed

### Family Storytime

Family Storytime is an opportunity for families to bond over shared stories and songs, as well as engaging in creative activities that reinforce a lifelong love of learning. Ages 3-8 and their families. Wednesdays @ 11:00AM - noon

### Telling Stories Through Movement

with Ambo Dance Theatre Company Part performance and part interactive audience experience! This workshop begins with an improvisational performance of a children's book (e.g. The Lorax, etc.) by Ambo's Junior Company and/or Apprentices. Following this, participants will get up and move themselves to engage in exercises in group compositional improvisation, creative movement, and site-specific dance themed around a variety of diverse and beloved children's stories. All ages, family-friendly Friday, August 5 @ 1PM - 2PM

### Evening Family Storytime

An evening family storytime for children and their families. Family storytime is an opportunity for families to bond over shared stories, songs, and creative activities. Storytime reinforces a lifelong love of learning. Ages 3-8 and their families. The theme for this storytime is beach vacation.

Monday, August 8 @ 6:30PM - 7PM

Living Color Tie-Dye Party

Bring your own t-shirt, handkerchief, socks, or anything you want to liven up with brilliant colors!

Ages 7+

Thursday, August 11 @ 5PM - 6:30PM

### Living Color Tie-Dye Party

Bring your own t-shirt, handkerchief, socks, or anything you want to liven up with brilliant colors! Ages 7+

Thursday, August 11 @ 5PM - 6:30PM

### Teen Night

Come hang out, play games, and make crafts based on our monthly theme. This month we will be making DIY bath bombs! Ages 12-18

Monday, August 15 @ 6PM - 7PM

### Crochet Club

Come hang out and share your crochet projects with us. Beginners welcome. There will be supplies for crocheting during the program and some simple patterns available. Ages 18+.

Wednesday, August 17 @ 5:30PM - 6:30PM



### Movie Screening: Mulan (2020)

To keep her ailing father from serving in the Imperial Army, a fearless young woman disguises herself as a man and battles northern invaders in China. PG-13: Parents Strongly Cautioned. Some material may be inappropriate for children under 13.

Ages 13+

Thursday, August 18 @ 4:30PM - 7PM

### Computer Basics

This group class will guide you through the basics of computer use, including using the mouse, navigating the desktop, opening programs, and more. No registration required.

Monday, August 22 @ 6PM - 7PM

### Pop Up at the Park - Portland Wharf Park, 719 N 32nd St

Come join staff from the Portland Library for some sun, fresh air, books, and a craft for the kids at the park (if the weather allows). Sign up for a library card and/or check out library materials at these three pop up library events.

Saturday, August 27 @ 11AM - 12PM

### Mystery Book Club - With a Twist!

A monthly book club where you read the mystery you want based on a monthly theme. August's theme is a mystery book set in Kentucky. Call 502-574-1744 for information.

Tuesday, August 30 @ 12:30PM - 1:30PM

### Outdoor Mindfulness

Join us in the backyard of the Portland Branch while we enjoy guided meditation and some simple mindfulness exercises. Mats will be provided for use. This program will be held inside if the weather is not cooperating.

Wednesday, August 31 @ 5:30PM - 7PM



**Family Health Centers**  
IMMEDIATE CARE

*Sick and need to see a doctor today?*

Try  
**Family Health Centers**  
Immediate Care.  
Same day, walk-in care for when you are sick.

FHC-Portland  
2215 Portland Avenue  
502-774-8631  
[www.fhclouisville.org](http://www.fhclouisville.org)  
fhclouisville

church of the  
**PROMISE**

**1800 Portland Ave**  
**502-439-0189**

**Worship Celebration**  
**Sunday - 11:00 a.m.**

**Celebrate Recovery**  
**Thursday - 6:30 p.m.**

[www.bethepromise.org](http://www.bethepromise.org)

**Shaheen's**  
DEPARTMENT STORE

Since 1922

**Name Brand Clothing**

- Family
- Industrial
- Medical Uniforms
- School Uniforms

2604 Portland Avenue  
Louisville, Kentucky 40212  
**778-9741**



*The famous Bluesmobile.*

*Have a Safe and Happy  
School Year 2022-2023  
Watch out for the School Buses,  
they are carrying our children!*

## *Good Shepherd Catholic Parish*

### **MASSES**

Mass Saturday 4 PM,  
Sunday 11 AM,  
Daily 7:30 AM

Good Shepherd Catholic Parish  
3511 Rudd Avenue  
**502-749-9780**  
goodshepherdchurch.us

### **Klein Bros.**

1101 W. Broadway

**587-6886 587-7950**

**Locksmiths**

**Door Closers**

**New and Used Safes**

The Bluegrass Blues Brothers Band featuring Elvis took the stage at The Good Shepherd Church in Portland brought by Good Sheperd's Men's Club for a fun family night out. The Bluesmobile was there as well. We're on a mission from God.



*Fr Deo on the job!*



*Fr Deo and Elvis! Fr Deo is on the left.*



### **GIBBY'S LOCKSMITH SERVICE**

**Commercial & Residential  
Sales - Service - Installation**

**Car Door Opening - \$34.95**

**House or Business Door Opening - \$49.95**

**Lock Re-Keying starting at - \$64.95**

**Notary Public Service (KY)**

**Call or Text (502) 802-7273**

E-Mail: gibbyslocksmith@gmail.com

## PORTLAND PROMISE CENTER **EARLY CHILDHOOD PROGRAM**

**AGES  
3-5**

**SCHOLARSHIPS  
AVAILABLE**

**ACCEPTING  
CHILD CARE  
ASSISTANCE  
(CCAP)**

**PICK-UP  
APPLICATIONS  
AT THE CENTER**

**PROGRAM OPENING  
FALL 2022**



**FOR MORE INFORMATION  
CALL OR VISIT  
(502) 776-2635  
1831 BAIRD STREET  
LOUISVILLE, KY  
40203**



Elvis performing at Good Shepherd

## Classified Ads

Want to advertise here?

CLASSIFIED ADS MUST BE PAID FOR WHEN SUBMITTED "NO EXCEPTIONS"

Send your classified ad, plus Check or Money Order. 20 cents per word, and the phone number counts as a word

To: Portland Anchor, P.O. Box 2108, Louisville, KY 40201-2108

### FURNISHED ROOMS FOR RENT

1923 W. Chestnut. A very nice place, for very nice people. Free: phone, Wi-Fi, laundry room. Beautiful baths and kitchen. Elegant victorian building, parking, security, bus, garden, central air. \$529 monthly, \$125 deposit. 776-1964.

### WE BUY, SELL, AND RENT HOUSES!

694best.com  
(502) 694-BEST (2378)

### PROPERTY RESEARCH ASSISTANT, PART-TIME:

A new homeownership program between Portland Now and the Housing Partnership, Inc (HPI) is looking for a part-time Property Research Assistant. \$15/hour, work from home under supervision by HPI, and work with PNI volunteers. Training available. Will research deeds, tax status, and history of code violations for currently vacant properties in Portland. CONTACT Gary Watrous, PNI, at [watrousoffice@aol.com](mailto:watrousoffice@aol.com) before September 10<sup>th</sup>.

**Don't miss the deadline!**  
**September Portland Anchor**  
**AUGUST 17<sup>th</sup>**

Anything received after the deadline will be saved for the next issue, no exceptions.

## August is National Breastfeeding Month!

### Breastfeeding is best for BABIES!

- Breast milk helps your baby grow healthy and strong with special ingredients not found in infant formula.
- Breast milk changes as your baby grows so it is always the perfect food in the perfect amount.
- Breast milk is gentle to your baby's stomach and easy to digest. Breastfed babies' bowel movements smell better!
- Breastfed babies are healthier:
  - Less colic, less constipation, and less diarrhea.
  - Fewer earaches, respiratory problems, allergies, and eczema.
  - Less likely to die of Sudden Infant Death Syndrome (SIDS).
  - Less likely to be overweight or have diabetes as a teen and adult.

### Breastfeeding is best for MOMS and families!

- Breastfeeding is convenient. Breast milk is always ready – no mixing, measuring, heating, sterilization, or clean-up.
- Breastfeeding is cheaper and saves money.
- Breastfeeding is a special experience that moms and babies can share.
- Breastfeeding often helps moms lose weight gained in pregnancy.

**Are you pregnant? Are you a breastfeeding mom?** There's lots of help for moms who are thinking about breastfeeding or already are. You'll learn about how your baby should latch on to your breast, positions you can use during breastfeeding, how often and how long to nurse your baby, how to tell if your baby is getting enough to eat, how to deal with any problems that come up, and more!

- <http://www.fhclouisville.org/healthed>
- <http://www.womenshealth.gov/breastfeeding/>
- Metro Louisville WIC Program (574-6511)
- University of Louisville Hospital (562-6081)
- Norton Healthcare (899-6530)
- Baptist Health Louisville (897-8888)

### Is your daughter pregnant? Is your girlfriend or wife pregnant?

There are many things you can do to support her as she breastfeeds:

- Learn about the benefits of breastfeeding.
- Attend classes about breastfeeding with her.
- After the baby is born, help out by making sure she is comfortable and has supplies she needs while breastfeeding.
- After the baby is born, know who to call for help if she has any concerns about breastfeeding.

For more information, call Kristin Munro-Leighton,  
FHC Health Educator: 772-8588

## BJ'S KUSTOM AUTO

3144 Bank Street

502-767-0290

Open 9 to 5



**BRAKES**      **OIL CHANGE**  
**TIRE**            **TUNE UPS**



**HEADLINERS**      **VINYL TOPS**

**CHECK ENGINE LIGHT**

**WE PAY TOP DOLLAR FOR JUNK CARS**

**NEED**  
**RENOVATION**  
**ASSISTANCE ?**

- ask Portland Architect -

Gary Watrous

\$45/hr. for Portland

Call 776-7007



**BC Plumbing Co**

**502-634-9725**

[www.bcplumbing.net](http://www.bcplumbing.net)

## Calendar of Events

If you have a special event coming up, let us know before deadline and we will carry it in the Calendar of Events. Call Sherry Stewart, 775-6036 to list your event. If your club or organization is not listed here and you would like it to be, just give me a call.

*If your group information changes, please let us know.*

## PORTLAND NOW, Inc. Monthly Neighborhood Meeting

**August 2, 2022 - 6:00 PM**

### The Table

1800 Portland Ave.

This month we will have 20 of the Judicial Candidates at the meeting for the citizens to meet and hear their Judicial Philosophy. This is the best way to get to know who is running for District and Circuit court seats here in Jefferson County. You are urged to mark your calendars now. Make sure you are at the August Meeting.

**AMERICAN LEGION POST 193**  
4th Tuesday of the month, 7 pm,  
2800 W. Main St. New members welcome.

**AMERICAN LEGION POST 193**  
**LADIES AUXILIARY**  
4th Tuesday of the month, 7 pm,  
2800 W. Main St. New members welcome.

**LEWIS/PARKLAND LODGE 638 F&AM**  
Meets first and third Fridays, 7:30 pm, at  
The Masonic Lodge at 2nd & Kentucky Sts.  
Gary Elder, Master 937-3384; Virgil T. Larimore,  
Secretary, 339-7640.

## HELP US HELP OTHERS!

All we need is one hour of your time to help a senior citizen in your neighborhood!

Meals-on-Wheels is looking for volunteers to deliver lunchtime meals to homebound senior citizens. There are many senior citizens living in the Louisville Metro area that are unable to receive meals on wheels due to a severe shortage of volunteers.

### Qualifications:

- Complete an application, including police record check
- Provide own transportation

Meals are picked up around 10:00 - 10:30 am and delivery takes about 1 hour. Training is provided. Call 574-6420 to volunteer.

### SUPPORT GROUP MEETING FOR PARENTS OF CHILDREN WITH LEARNING DIFFERENCES AND ATTENTION DIFFICULTIES

Meets the third Thursday of each month at 7:00 - 8:30 pm. Learning Disabilities Association of KY, Inc. 2210 Goldsmith Lane #118. Louisville, KY 40218. LDA Office at (502) 473-1256, for additional information.

### ADULTS WITH ATTENTION DEFICIT DISORDER

Support group meets on the fourth Thursday of each month, from 7 - 8:30 pm at the offices of Learning Disabilities Association of KY, Inc. 2210 Goldsmith Lane #118, Louisville, KY 40218. LDA Office at (502) 473-1256, for additional information.

### LEARNING DISABILITIES ASSOCIATION OF KENTUCKY, INC.

Volunteers needed for general office work, special events, and tutoring. Tutors will help students of average to above average intelligence who learn differently. Please call our office at 502-473-1256.

### WEST JEFFERSON COUNTY COMMUNITY TASK FORCE

Meets the 3rd Tuesday of every month, 6 - 8 pm, 3rd floor Conference Room, The Nia Center, 2901 W. Broadway. We are an Environmental Group and we need more Portland residents to participate. Contact Carl Hilton at 852-4609 for information.

### NEIGHBORHOOD HOUSE NUTRITION PROGRAM FOR SENIOR CITIZENS

201 N. 25th Street. 774-2322. Meals and activities daily from 9 am to 1 pm. 60 yrs. and up donation suggested.

### HOUSING PARTNERSHIP

Meeting dates: Mondays 6 pm and Wednesdays 10 am or 2 pm, Downtown, 333 Guthrie, Room 404, Lou., KY. Must call for enrollment. Phone (502) 585-5451, fax (502) 585-5568.

### CONSOLING PARENTS

A support group for parents who have lost a baby through miscarriage, stillbirth or newborn death, 6:30 pm. Tuesday at First Lutheran Church, 417 E. Broadway. Information 629-2103.

**Dare To Care**  
at St. Cecilia Campus  
2519 St. Cecilia Street  
the 3rd Tuesday of the month at 10 AM

**Dare To Care**  
will be at Portland Avenue Community Trust (PACT) Parking Lot at the new location in the former Portland Christian School, 2508 Portland Avenue

**1st Tuesday of the month**  
**10 AM**

### BIRTH PARENT SUPPORT GROUP

For those considering placing a child for adoption and for those who have placed a child. Sponsored by Adoptions of Kentucky, Inc. Call (502) 585-3005 for additional information.

### CONSOLING PARENTS

A support group for parents who have lost a baby through miscarriage, stillbirth or newborn death, 6:30 pm. Tuesday at First Lutheran Church, 417 E. Broadway. Information 629-2103.

### MANIC DEPRESSIVE & DEPRESSIVE ASSOCIATION OF LOUISVILLE

6 pm Sunday at the Urban Co. Government Center, 810 Barret Ave. Separate meetings for clients and their families are available. Information: 897-9717.

### THYROID CANCER SURVIVORS

The ThyCa Louisville Support Group (for survivors of Thyroid Cancer) will meet from 10 - 12 pm monthly at Norton Audubon Hospital, Louisville, KY. Call for times and dates; also directions and other details about ThyCa Louisville. Contact group facilitator Pamela Pringle at (502) 394-0354. All ThyCa Survivors' Support Groups are free and open to anyone diagnosed with thyroid cancer, their families, friends and colleagues.

## Portland Avenue Community Trust PACT

2508 Portland Avenue

Located in the Portland Depot, the former Portland Christian School

The Food Pantry and Clothes Closet are presently open every Thursday

**11:00 to 1:00**

Free Groceries / Free Clothes and Shoes for Adults and Children.

## Janes Bros.

**ACE Hardware**

2527 Portland Avenue

**Plumbing &**

**Building Supplies**

**Drywall ♦ Roofing**

**Cement ♦ Lumber**

**OPEN**

**Mon. - Sat. 8:00 - 6:30**

**Sunday 11:00 - 5:00**

**Phone 778-8727**

## AA meetings in Portland

### Grace Community has AA Meetings

Family Health Center  
2215 Portland Ave., 4th Floor

**Tuesday night at 8:00 PM**

For more info call (812) 557-0823

*Does someone's drinking bother you?*

## AL-ANON

**District 1 Al-Anon meeting**  
**Louisville's West End**

**When: Tuesday, 6:30 p.m.**

**Where: YMCA**

930 W. Chestnut St.

7th Floor

**For Friends and Family member who are troubled by someone else's drinking.**

Break the Chains of Addiction  
**Reformers Unanimous**  
**Faith Based Addiction Program**  
*Reformers Unanimous Ministries -*  
*"We Help Anybody"*

Reformers Unanimous Ministries exists to help anybody worldwide who wishes to experience a life of victory over difficulty. This victory is obtained and retained not through an experience of ongoing effort, but through a once in a lifetime decision to accept Jesus Christ as their personal Savior and a subsequent dedication to developing a dynamic love relationship with him.

## Reformers Unanimous Addiction Program

*"We Help Addicted Adults Find Freedom"*  
Reformers Unanimous Addiction Program exists to help adults find freedom from addictive behavior. We accomplish this by assisting them in gaining and maintaining consistent communication with the Highest Power. This power is not a higher power chosen by them, but a Holy Power that has chosen them. Usefulness in life is then attained with community service through good local churches.

### Shawnee Baptist Church

2214 Bank St., Louisville, KY 40212

**Meets every Friday 7-9pm**

For Information call 502-741-9961

**The Housing Partnership, Inc.**  
Provides free homebuyer education and financial counseling to residents and homebuyers on an ongoing basis. Enrollment is necessary. Please call (502) 585-5451 for more information. www.WeAreHPI.org.

## Recipes from the Ladies of Baptist Tabernacle

It's August already? August comes in hot and humid, but toward the end of the month we turn our attention to a new school year. New clothes, school supplies, maybe, even a new school. Where did the year go?



### Bean Medley

- 1 cup salad dressing
- 1 tsp mustard
- 2 boiled eggs, chopped
- ¼ tsp garlic salt
- 3 Tbs lemon juice
- a dash of hot pepper sauce
- 2 Tbs minced onion
- 1 9 oz pkg. frozen green beans
- 1 tsp Worcestershire sauce
- 1 10 oz pkg frozen peas
- 1 10 oz pkg frozen baby limas

Mix all ingredients except vegetables. Stir over low heat till hot. Cook vegetables according to pkg. Drain and place in serving bowl. Pour sauce over vegetable and mix well.



### Beets with Pineapple

- 2 Tbs brown sugar
- 1 tbs cornstarch
- ¼ tsp salt
- 1 cup pineapple tidbits
- 1 Tbs butter
- 1 Tbs lemon juice
- 2 cups canned sliced beets, drained

Combine sugar, cornstarch, and salt in saucepan. Stir in pineapple with syrup. Cook, stirring constantly, till mixture thickens and bubbles. Add butter, lemon juice, and beets. Cook over medium heat until hot. Approximately, 5 minutes.



### Pizza Your way, Pizza My way

- 1 pkg of refrigerated sugar cookie dough
- 8 oz. Cream cheese
- 3 cups powdered sugar
- 12 oz. Whipped topping

Topping favorites. (coconut, chocolate chips, peanuts, M & M's, Maraschino cherries, kiwi, pineapple, any type of berry. Choose what you like or try all of them)

Press cookie dough onto pizza pan. Bake for 12 minutes at 350 degrees. Let cool. Mix cream cheese, sugar and whipped topping. Spread on cookie crust. Add toppings. Have fun making it. Have fun eating it.



### Bar-Be-Cups

- ¾ lb. Hamburger
- ½ cup barbecue sauce
- ¼ cup minced onion
- (8oz.) can refrigerator biscuits
- ½ cup shredded Cheddar cheese

Brown hamburger and drain. Add barbecue sauce and onion. Set aside. Place 1 biscuit in each ungreased muffin cup. Press dough up the sides to the edge of the cup. Spoon meat mixture into cups. Sprinkle with cheese. Bake at 400 degrees for 10 minutes or golden brown. You might want to make more of these. If so, double or triple the recipe.



### Swiss Corn Bake

- 2 9oz pkg frozen corn
- 1 6oz can evaporate milk
- 1 egg, beaten
- 2 Tbs. Finely chopped onion
- ¾ cup shredded Swiss cheese

### Topping:

- ½ cup bread crumbs
- 1 Tbs melted butter
- ½ cup Swiss cheese

Cook corn according to pkg and drain. Combine with milk, egg, and onion. Add cheese salt and pepper to taste. Mix well and place in baking dish. Combine Topping ingredients and sprinkle over top. Bake at 350 degrees for 25 minutes.



### Sunshine Carrots

- 5 medium carrots
- ½ tsp ground ginger
- 1 Tbs sugar
- ¾ cups orange juice
- 1 tsp cornstarch
- 2 Tbs butter or margarine
- ½ tsp salt

Cut carrots on the bias in 1 inch chunks. Cook in salted water for 20 minutes, drain. While carrots are boiling, combine the next 4 ingredients in saucepan. Add orange juice and cook, stirring constantly, till mixture thickens. Boil for 1 minutes then add butter. Pour over carrots and mix until well blended.

## Support The Portland Businesses

The Following Advertisers help make the Portland Anchor possible. Please consider supporting these businesses in the Portland Community, and look for their ads in this issue.

What a great way for the people of Portland to find your neighborhood business quickly! Get on The List! If you would like your business listed here, call us today!

### ARCHITECTS

Gary Watrous, Portland Architect . . . 2711 W. Main St. . . . . 876-7100

### CLOTHING/DEPARTMENT STORES

Shaheen's . . . . . 2604 Portland Ave. . . . . 778-9741

### FLORISTS

Victor Mathis Florist . . . . . 2531 Bank St. . . . . 772-3649

### FUNERAL HOMES

J.B. Ratterman & Sons . . . . . 2114 W. Market St. . . . . 776-4661

Legacy Funeral Center-Schoppenhorst Chapel . 1832 W. Market St. . . 585-4394

### HAIR SALON

Holiday Hairstyles & Tanning . . . . . 536 N. 26th St. . . . . 776-7916

### HOUSEHOLD SERVICES

BC Plumbing Co. . . . . www.bcplumbing.net . . . (502) 634-9725

Janes Bros. ACE Hardware . . . . . 2527 Portland Ave. . . . . 778-8727

New Albany Heating, A/C & Electric . . . . . New Albany . . . . . (812) 944-6019

### RESTAURANTS

Annie's Pizza . . . . . 2520 Portland Ave. . . . . 776-6400

### THE PORTLAND ANCHOR

Advertisements, Articles, Information & Subscriptions . . . . . 775-6036

**Call 775-6036 Today To Get Listed!**

## Good Shepherd Catholic Parish HALL RENTAL

**Available to Rent for Clubs,  
Receptions & Reunions**

Lehmann Hall  
3525 Rudd Ave.

**(502) 749-9780**

goodshepherdchurch.us



## Portland Relatives: Anna Catherine Hopper and John Claude Stewart- Part Five

*Submitted by Deanna Hopper*

First, I need to clarify that in my last article about my great-grandfather Brewer Hopper's first wife and their son Russell I used Earl and Russell interchangeably which might have caused confusion. Some of my family records have this great-uncle listed as Earl Russell but on his death certificate he is listed as Russell Earl Hopper.

This article picks up with my great-grandmother Anna Catherine and her second husband John Claude Stewart. As I stated in the August 2021 edition, Anna and John Claude were married in 1941. They are not found in city directories from 1941 to 1956 most likely because the home they moved to was outside the city limits. When Carons started a Suburban directory, they show up there in 1957 on Indian Trail and from 1958-1960 on 5612 Indian Trail.

One interesting source of information you can use to find personal descriptions of your ancestors is draft cards. John Claude's 1942 WWII draft registration card shows him at 1823 Griffith Avenue with Anna at the same address as a "person who will always know your address". He was white, had light complexion, and had blue eyes, was balding with grey hair, weighed 151 pounds and was 5'8" tall. He had a scar on his right hand between fingers. His DOB is given as 8/17/1870 in Crawford Co. Missouri. His place of employment was given as Inman Furniture Co. at 288 Broadway. His WWI draft registration shows that he claimed an exemption due to being the sole support of his widowed mother and that he had a heart condition.

It is known that Anna and John Claude, her daughter and son-in-law Camille and Charly Crandell, and Anna's youngest son Paul and his wife Dorothy had houses built on Indian Trail. My dad, Donald Hopper, remembers visiting them out there on Sundays when he was a child. According to a deed dated March 1943, Anna and John Claude bought the property from the Heazlitts who had the property since 1913. They were to pay \$250 in monthly installments of ten dollars at six percent per annum. Since I started writing these articles, the 1950 Decennial Census has become available to the public. As a former Census employee I found that many citizens do not know that counting the entire population every ten years was one of the early actions our new government implemented. To encourage people to answer the Census, individual returns are kept private for seventy-two years. The census for 1950 shows my great-grandmother Anna C Stewart as wife of John C Stewart head of household at R 2 Box 667. She is listed as white, female, age 66, married, POB

Illinois, housewife. He is listed as white, male, age 58, married, POB Missouri and he worked 40 hours per week as a laborer at a farm implement manufacturer. Additionally, Anna was listed as having a fifth-grade education. Also at R 2 box 651, Anna's aforementioned daughter Camille and son-in-law Charlie were listed with their son Richard and daughter Francis who is listed as divorced.

Unfortunately, my grandmother was widowed again in 1961. John Claude's death certificate and obit showed that he died 4/26/1961 at home at 5612 West Indian Trail of myocardial infarction and atherosclerotic heart disease with myocardial insufficiency as a contributing factor. He was buried in Evergreen Cemetery. Their will bequeathed their property to each other. The house and land at 5612 W Indian Trail, along with garden tractor and trailer, coal stove and coal in shed, one roll each of fencing and barb wire, steel posts, and a wheelbarrow was sold July 1961 for \$3,750.

My dad thought he remembered that Anna lived in private care homes in Portland in her later years. She is listed in the city directory in 1964 as Anna C Stewart widow of Claude at 2718 Bank and in 1965 at 2918 Bank listed with a Mrs. Velma Bowers. I thought that when I visited her as a little girl with my grandfather Raymond Hopper she lived in a private care home with other aging people in New Albany, Indiana. I have a very vivid memory of her putting her hands to my face as if she wanted to impart something to me. I also remember that when I visited my grandparents at their home on Yenowine Lane in Edwardsville, Indiana it would take two or three men to carry her in her wheelchair up the steps into the house.

Anna's death certificate states that she died at 705 E Oak, New Albany, IN on 3/14/67. She is listed as white, widowed female, DOB 6/9/1884 in Campbell Hill, IL, a housewife. The informant, her son Raymond, did not know her parent's information. She died of acute congestive heart failure due to atherosclerotic heart disease. She was buried 3/16/67 at Evergreen Cemetery next to John Claude Stewart.

After the expenses of her funeral etc. she left the remaining \$2538 divided evenly between her three natural children Camille Crandall, Paul Hopper, Raymond Hopper, and her stepdaughter Lula Mae Norton (later Mioduszewski). Earl Russell Hopper, her stepson from her first marriage to Brewer Hopper, preceded her in death in 1962. Her son Raymond married a Portland girl, Margaret Cunningham and they had three children Donald L, and twins Samuel R and Sharon R Hopper. Don came back to Portland in the 1960's and continues to live here today as do some of his children and grandchildren.



## The Portland Anchor

*Oldest Community Newspaper in the Louisville Area*

*Serving the Community of Portland, and the surrounding area of Kentucky and Indiana Since 1974*

### AD SIZE

### RATE

1/16 Page - 2.47" wide x 2.58" deep	\$25.05
1/8 Page - Horizontal - 4.97" wide x 2.58" deep	\$50.10
1/8 Page - Vertical - 2.47" wide x 5.15" deep	\$50.10
1/4 Page - 4.97" wide x 5.15" deep	\$100.20
1/2 Page - Vertical - 4.97" wide x 9.89" deep	\$200.40
1/2 Page - Horizontal - 10.25" wide x 5.15" deep	\$200.40
Full Page - 10.25" wide x 9.89" deep	\$400.80

portlandanchor@att.net

P.O. Box 2108, Louisville, KY 40201-2108

Call Sherry Stewart at (502) 775-6036

for Display Ads, Billing, Classified Ads & General Information

# YEAR ROUND COMFORT

**Mr. Heat**      **Mr. Cool**

**NEW ALBANY HEATING**

*Air Conditioning*

**Goodman**  
Air Conditioning & Heating

# 812-944-6019

**Serving Louisville & Southern Indiana**